

INVITATION

The ISMF World Cup 2025 will be held from 14th to 15th March 2025, according to the rules of the International Ski Mountaineering Federation (ISMF) for Skimountaineering World Cup competitions.

On behalf of the Austrian Ski Federation and the official organizing committee, we are delighted to welcome all teams to the WÜRTH MODYF ISMF World Cup in Schladming.

EVENT ORGANIZER CONTACT

Enclosed you will find all important information on the event. For further event related questions please contact the LOC - Skiclub Raiffeisen Gröbming:

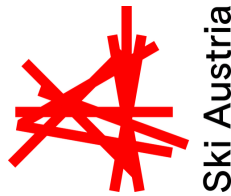
Chief of LOC:

Erwin Mayer - Phone: +43 664 1217152 - Email: e.mayer@hsg-schattauer.at

ORGANIZING COMMITTEE

Director of LOC:	Erwin Mayer (AUT)
ISMF Official Representative:	Pierre Dupont (FRA)
ISMF Technical Delegate:	Rocco Romagna (ITA)
ISMF Jury President:	Toni Massagué (ESP)
ISMF Referees:	Silviu Balan (ROU)
ISMF VAR Operator:	Dariusz Finster (POL)
National Referees:	Jörg Fegg (GER)
LOC Race Director:	Hannes Mayerl (AUT)
LOC Track Director:	Harald Danklmaier (AUT)
Media:	Martin Weigl (GER)

Official organizer:	Austrian Ski Federation – Ski Austria
Carried out by:	Raiffeisen Skiclub Gröbming



SCHLADMING
DACHSTEIN



REGISTRATION

Entries will only be accepted from National Members following ISMF quotas and rules for the Ski Mountaineering World Cups. Entries only will be accepted via the ISMF online registration system within the deadlines. Final entry deadline March, 9th 2025.

REGISTRATION FEE

The registration fee is € 60,- per Athlete per race.

RADIO REGISTRATION

Due to Austrian Law, all (Team)radio equipment used during the event has to be registered. Please use the application form in the download on the event website.

ACCREDITATION and RACE OFFICE

We kindly ask that only one representative of each team collects all accreditations. Registration and accreditation take place in the race office:
Planai-Hochwurzen-Bahnen - Coburgstrasse 52 - 8970 Schladming

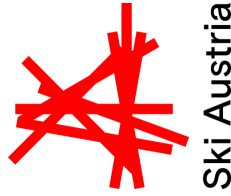
Opening times:

Wednesday, 28.02.2024:	14:00 - 18:00
Thursday, 29.02.2024:	08:00 - 18:00
Friday, 01.03.2024:	08:00 - 18:00
Saturday, 02.03.2024:	08:00 - 20:30

ACCOMODATION

SCHLADMING-DACHSTEIN Incoming GmbH
Bibiana Schweighofer | Ramsauerstraße 756 | 8970 Schladming | Austria
Tel: +43 3687 23310 112 | bibiana.schweighofer@schladming-dachstein.at

According to the ISMF World Cup rules we will offer accommodation from the official arrival day until the official departure day. Teams must announce the room reservation via the Tourism board of Schladming-Dachstein as mentioned below. Please note the registration deadlines. Please note that accommodation at the ISMF rate is available for the dates of the official program only. Early arrivals and late departures are subject to availability and are not available at the ISMF rate. Additional Officials have to be paid directly in the hotel. Any extras must be paid by the teams or athletes themselves. A credit card is requested at your arrival at the hotel for deposit.



SCHLADMING
DACHSTEIN



PROGRAM* including CEREMONIES

Thursday, 13.03.2025

Arrival & Official Registration

16:30 TCM I WM-Studio - Planai-Hochwurzen-Bahnen - Schladming

18:30 Official Opening Ceremony I Planai Stadion Schladming

Friday, 14.03.2025

Vertical Race*

13:30 Pre-Start TCM

14:05 Start Senior Men

14:20 Start Senior Women

Flower Ceremonies after each race in the finish area

18:00 Award Ceremony in the Planai Stadium

Saturday, 15.03.2025

Sprint Races*

15:50 Pre-Start TCM

16:20 Inspection

17:00 Qualification Senior Women

17:25 Qualification Senior Men

18:00 Heats

18:55 Semifinals Senior Women

19:09 Semifinals Senior Men

19:30 Final Senior Women

19:40 Final Senior Men

19:47 Flower Ceremony

20:30 Award Ceremonies

Sunday, 16.03.2025

Reserve & Departure

*Exact times to be defined on TCM

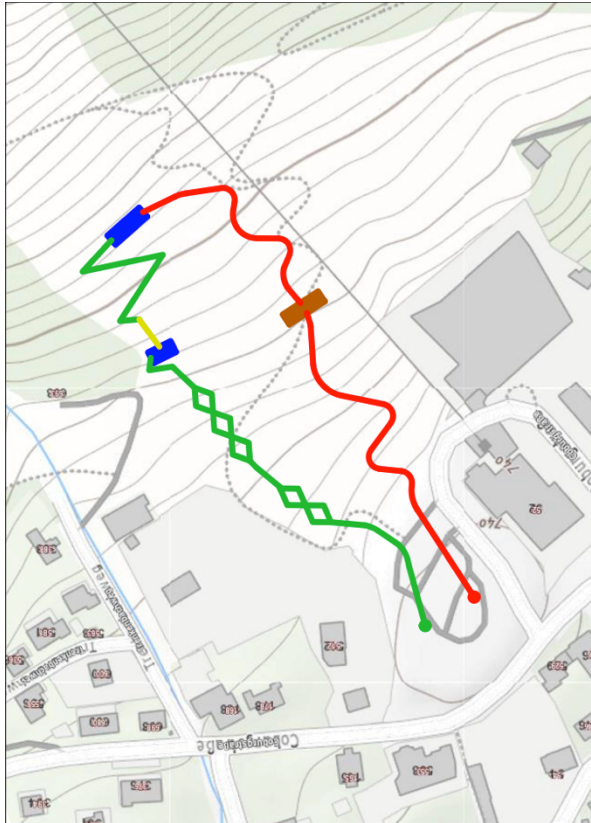
ANTI-DOPING

Anti-Doping controls and tests will be carried out in accordance with the ISMF Anti-Doping rules.

DATA PRIVACY

The applicable data protection declaration can be found at this link:
<https://www.skiaustria.at/de/datenschutz>

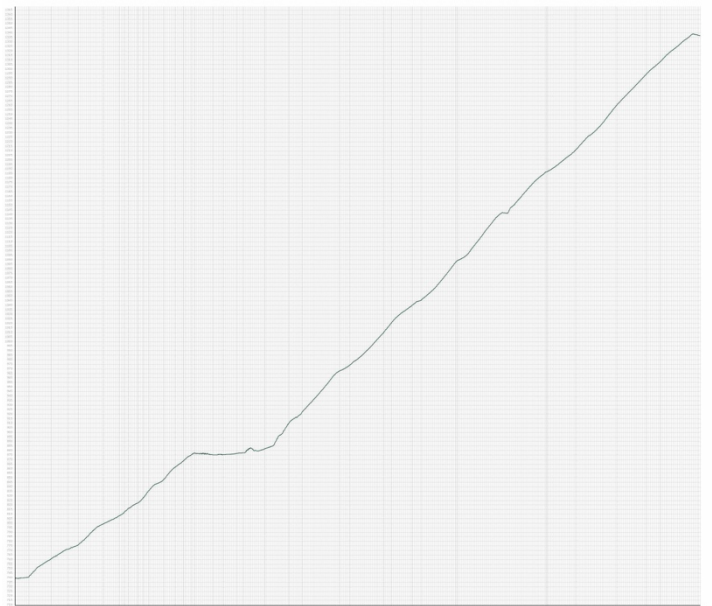
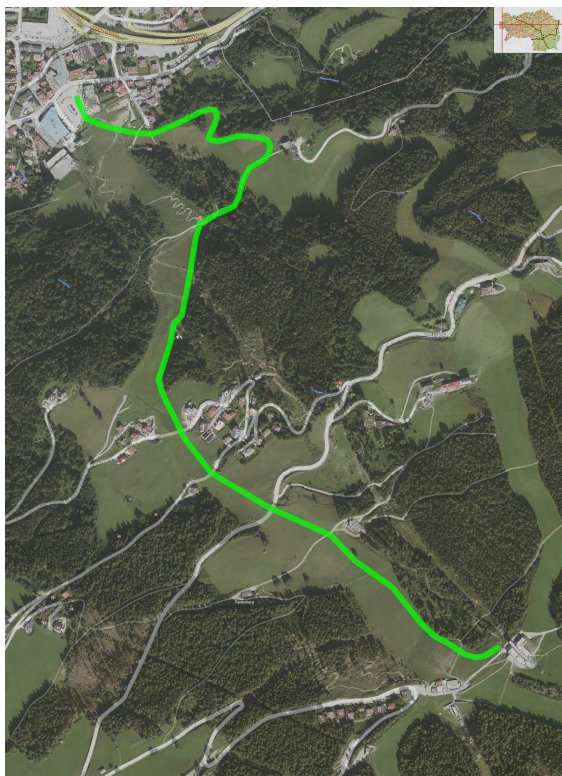
RACEMAP



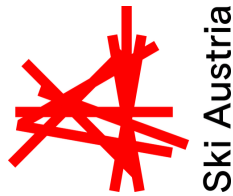
—	Aufstieg	/	Climb
—	Tragepassage	/	Carrying passage
—	Abfahrt	/	Departure
—	Podest - Plateau	/	Platform
—	Sprung	/	Jump
●	Start	/	Start
●	Ziel	/	Finish

Racetrack Sprintrace:
Height difference 70 m

8								
7								
6								
5								
4								
3								
2								
1								
Änderung		Datum	Name	N.gepr.				
Maßstab		STRECKE "SPRINT"			Auftrags-Nr.:			
1:200		ISMF-WC 2025			ISMF/WC/SPRINT/2025		Zeichnungs-Nr.:	
					SP/01			



Racetrack Verticalrace: Length 2,2, km – Height difference 615 m



PARKING

We kindly ask all team members to carpool and take as few cars as possible to the Start area. The required parking permit will be handed out when registering in the race office. You will find reserved parking areas in the parking garage directly at the start area – please mind the maximum height 2,4 meters! Additional parking lots are available on P2 and P3 within a 3 minutes' walk from the stadium.

